

Strategic Environmental Assessment

Labrador Shelf

Newfoundland and Labrador Offshore Area

Akkisuigasuanik Avatinga Kanuilinganialimmangât

Labradorip Kulivitsivingani

Newfoundland Labradorilu Imappigalangani

Scoping Document

DRAFT FOR PUBLIC COMMENT

Takunnâtanga Atuagaliuttausimajuk

SIVULLIA INULIMANUT KAMAGIJAUKUDLUGU

Canada-Newfoundland and Labrador

Offshore Petroleum Board

Canada-Newfoundland amma Labrador

Imappet Utsualunginnut Angajukkatigengit

April 2007

Table of Contents

Pitangit

	<u>Page No.</u>
	<u>Paginangit.</u>
1.0 Introduction.....	1
Sunaummangâta	
2.0 Background.....	2
<i>Susimalimmangâta</i>	
3.0 Area of Focus.....	5
Ininga Takunnâtaujuk	
4.0 Working Group	8
Suliakakatigejut	
5.0 Objectives	8
Piusigigumajangit	
6.0 Past and Present Oil and Gas Activities.....	9
Siagu Mânnalu Utsualuit Gasillu Suliagijaummata	
7.0 Scope of SEA	10
Takunnâtanga SEA	
7.1 Spatial and Temporal Boundaries.....	12
Initsak Mânnatuinnalu killingit	
7.2 Factors and Issues to be Considered	12
Kaujimat Isumagigatsailu Isumagijaugialet	
7.2.1 Physical Environment	16
Nunangatalu Avatinga	
7.2.2 Biological Environment.....	17
Ilupsingata Avatinga	
7.2.3 Project-Environment Interactions	23

Suliak - Avatinganut Utittanik	
7.2.4	Cumulative Effects..... 25 Angijuguvallianinga Sulimmangât
7.2.5	Environment-Project Interactions 26 Avatinga - Suliap Utittaviuninga
8.0	Conclusions and Recommendations..... 26 Nâninga Pikkujaliangutitaujullu
9.0	Consultations..... 27 Okalakatikannik
Figure 1 7
Ilanga 1	

1.0 Introduction/Sunaummangâta

This document describes a scope for a Strategic Environmental Assessment (SEA) of petroleum exploration activities in the Labrador Shelf area of the Newfoundland and Labrador Offshore Area. It outlines the factors to be considered in the SEA, the scope of those factors, and guidelines for preparing the SEA report.

Una atuagaliuttausimajuk Kaujitsisiajuk takutsaudluni mitsânut Akkisuigasuanimik Avatinga Kanuilinganialimmangât (SEA) imappet pitanginnik Kinijattukalippat Labradorip Kuivitsivinganigalak Newfoundland Labradorilu Imappigalangani. Taisijuk kaujimajujunik isumagijaukkudlugit tamasumani SEA-mi, takunnâdlugit kaujimajait, amma pusiukkujait atuinnguttitaummat tamna SEA kaujisautinga.

The Canada-Newfoundland and Labrador Offshore Petroleum Board (C-NLOPB) has the responsibility pursuant to the *Canada-Newfoundland and Labrador Atlantic Accord Implementation Act* and the *Canada-Newfoundland and Labrador Atlantic Accord Implementation Newfoundland and Labrador Act* (Accord Acts) to ensure that offshore oil and gas activities proceed in an environmentally responsible manner. The C-NLOPB decided in 2002 to conduct a SEA of portions of the Newfoundland and Labrador Offshore Area that may have the potential for offshore oil and gas exploration activity but that were not subject to recent SEA nor to recent and substantial site-specific assessments.

Tâmna Canda-Newfoundland amma Labrador Imappimi Utsualunnut Angajukkaukatigengit (C-NLOPB) kamagialet mitsânut *Canada-Newfoundland amma Labrador Atlantic Accord Atuttauninganut Maligatsasuanginnik ammalu tâmna Canada-Newfoundland amma Labrador Atlantic Accord Atuttauninganut Newfoundland amma Labrador Maligatsasuanginnik (Accord Acts)* nalunianginamik tamakkua imappimi utsualuit gasellu sujaulippata pigiasijauniammata avatingit kamagijautsiatillugit pusiukkujauningitigut. Tâmna C-NLOPB kajusilauttuk 2002-mi kamagiamut SEA-nganik tamatumani Newfoundland amma Labradorip Imappigalangani pitakagasugijaujuni imappimi utsualunnik gasinillu kinijukalippat kitali ilangit kamagijaulaungitut mânnakulolauttuk SEA ammalu mânnaulauttuk amma angijummagik inik-nallianguammangâta kanuk suvalliialimmangâtalulu

The C-NLOPB has decided to undertake a SEA for the Labrador Shelf portion of the Newfoundland and Labrador Offshore Area.

2.0 Background

Susimalimmangâta

Strategic environmental assessment is defined as “the systematic and comprehensive process of evaluating the environmental effects of a policy plan or program, and its alternatives” (Government of Canada Cabinet Directive, 1999). SEA incorporates a broad-based approach to environmental assessment that examines the environmental effects which may be associated with a plan, program or policy proposal and that allows for the incorporation of environmental considerations at the earliest stages of program planning. The Cabinet Directive was updated in 2004 to strengthen the role of SEA at a strategic decision-making level, by clarifying obligations of department and agencies and linking environmental assessment to the Implementation of Sustainable Development Strategies.

Akkisuigasuanik avatinga kanuk sulimmangât okalautautsiajuk sollu “ ilupsigijangatut amma iluingadlugu piusinga kamagidlugu kanuk pivallialimmangât avatinganik attui kattatut maligatsatigut akkisuttausimaningagut ugvalu sulijajauningagut, ammalu nalliagut asingita atuttaugajammangât” (Government of Canada Cabinet Directives, 1999) mitut. SEA pimmagiuttisik kattatut sittuni-kanningagut avatinga kanuk kamagijaunialimmangât kimiggulugillu avatingata attutaukattaningit sollu iliukkatausimajutitut atuinnguttitautillugu, sulianganut ugvalu maligatsanginnut pigumajauningit amma pivitsakattisiniammata pimmagiutitaummat avatingata isumagijauninganut tagvainaunitsak pigiasijausimajut sulianganut atuinnguttisitillugit. Tâмна Cabinet Directive oKaudjutaulauttuk 2004-mi sungutitsikagumadlutik itjusiutinganik SEA akkisuttauninganut kajusiuti-katillugit taipsumani, okatsiadlutillu piusigigumajanginnik suliakaffingit suliakajunginnilu ammalu atakkujidlutik avatinga kanuk kamagijaunialimmangât mitsânut Atuttausongulittilugu Pattangaitiuningagut Pivalliatillugit Akkisiguasuanningit

SEA typically involves a broader-scale environmental assessment (EA) that considers the larger ecological setting, rather than a project-specific environmental assessment that focuses on site-specific issues with defined boundaries. Additional information regarding SEA may be found on the Canadian Environmental Assessment Agency web site at <http://www.ceaa-acee.gc.ca>.

SEA taimatsainak atummijuk neronni-saudluni avatinga kanuk kamagijauningagut (EA) isumagiluadlugu anginitsauninga avatigalanga, isumagituinnalunnagulu suliatsatuinnauninganik avatinga kanuk kamagijaunialimmangât takunnâlutik tamânetsiamagillutik isumagijaujut kaujimadlugit killiginiattanginnitk.

Ilagi allangit Kaujisautet mitsânut SEA nagvâtausot Canadian Environmental Assessment Agency Kagitaujatigut <http://www.ceaa-acee.gc.ca>.

In this particular case, information from the SEA will assist the Board in determining whether exploration rights should be offered in whole or in part within the Labrador Shelf area and may identify general restrictive or mitigative measures that should be considered for application to exploration activities. The strategic decision of the SEA is used by the Board in the potential future issuance of one or more exploration licences pursuant to the Accord Acts, in the Labrador Shelf area, and consequent petroleum-related activities that may occur offshore. An exploration licence confers:

Uvaniulualli, Kaujisautik SEA mit ikajusonguniattuk Angajukkaukatigenik atunianninginnut nallianik kininnimut pivitsaujunik atuttaugiainnik iluingalugit ugvalu ilatuinnangit iluani Labrador Kulivitsivinganigalak ammalu nalliangummangâta atuttaugiakangitut kanuingitullonet isumagijaugialet uttutaugumallutik kinijagvisaugiangit. Akkisuigasuanimut kajusinnik mitsânut SEA atuttaujuk Angajukkaukatigenut isumagidlugit sivunivut tunitsiviugiamut atautsimik ununnisanillonet kiniutitsait laisansisanginnik pigumautitsanik Accord Maligatsasuanginnit, tamâni Labradorip Kuluvisasuanganigalak, atullugulu utsualunnik-galak pikatalippata sollu sakKiviugunik imappigalammi. Kininnimut laisansinga mitsânut atuttaugumajuk:

1. The right to explore for, and the exclusive right to drill and test for, petroleum;

Pivitsakagiamut kinigiamut, amma pivitsakanimmu putogigiamut uttunimmulu mitsânut, utsualugalait;

2. The exclusive right to develop those portions of the offshore area in order to produce petroleum; and,

Pivitsakannimut pivallianitsamik tamakkuningagalak imappigalammi sakKivallititsiguamut utsualunnik; amma

3. The exclusive right, subject to compliance with the other provisions of the Accord Act, to apply for a production licence.

Pivitsakagumammaginnimulu, angikatigejukakatillugu asinginnut mitsâgut Accord Maligatsasuangitigut, Kinugiamut sakKivalliatitsiniup laisansisaminik.

Activities associated with exploration licences may include: conduct of seismic surveys, other geophysical surveys, geotechnical surveys; drilling of wells (either exploration or delineation); and well abandonment. If one or more exploratory drilling programs successfully identify petroleum deposits with commercial potential, production activities may follow. Production activities may involve: drilling of wells (delineation, development/production, and injection wells); installation and operation of subsea equipment; installation and operation of production facilities; and production abandonment activities. However, the nature and scale of potential production activities is usually very difficult to predict in any but the most general of terms in the early stages of exploration in an area.

Sugalanningit mitsânut kinidlutik laisansingit atugajatangit ukunungagiallak: kamagiamut nunak aulatjanikagajammangât, asinginnilu nunangani kimiggulutik, kagitaujanik atullutik; putogillutik imittavitsanik (wells) (nalliagutuinnak kininnikut nalunaikkutatâtuluget); amma imittavimminik kimaituinnagiasigunik. Sollu atausik ununnisaillonet kinidluni putoginingit sulijagijait kajusitsiadlutik kaujigunik utsualummik kenaudjaliuttausongujumik, sakxivalliatitsinimmik kingulliutitsinialittilugit. Sakxivalliatitsinimmut sugalanningit sollu imailingatillugu: putoginnik imittavitsanik (wells) (nalunaikkutatâtâgillutillu, pivallianik/sakxivalliatitsinimmilu, amma imittaviliuttitullugit); iliukkailutik amma atullutik imappimigalak pikutialunginnik; iliukkailutik amma atullutik iliukkavinnik illunik; amma kimattautuinnagialinnik suliakajukalilluni. Taimaigaluattillugu, ilupsituinnanga amma angininga sugajammangât sakxivalliatitsinimmut sudlatuinnatunik tamânguluak ukumaimmagittuk kaujimagianga kanuk piniammangât nallinginni kitali sivunganiuluak pigiasijautainnamat Kinidluni tamânigalak.

Each of these activities requires the specific approval of the Board, including a project-specific assessment of its associated environmental effects in accordance with the *Canadian Environmental Assessment Act* (CEA Act). The SEA does not replace this requirement for a project-specific EA. However, the SEA will: provide an overview of the existing environment; discuss in broader terms the potential environmental effects associated with offshore oil and gas activities in the Labrador Shelf SEA Are; identify knowledge and data gaps; highlight issues of concern; and make recommendations for mitigation and planning.

Atunnit tamakkua sugalannet atugialet angittaukatillugit Angajukkaukatigenut, ilagidlugulu suliak-sunaummangât kanuk sulijajaunialimmangât

katutjikatikagenninganut avatinganik sujaummat piusiukkujauningagut Canadian Environmental Assessment Act (CEA Act) Maligatsasuanginnit. Tâмна SEA asianik ilipsiKattangituk tapsumunga pigumajaummat sulia-gijaugumajumut EA-mut. Taimaigaluattiluguli, tâмна SEA pisok: tunitsidluni takutitsigiamut mâнна avatigijanganik; okaudjudlunilu atuttaukattanitsanik siagu avatinganik sugajattunik katutjikatigennimut imappingani utsualungit gasingillu sujaulimmangâta Labradorip Kiluvitsivialuani SEA ukuanguvut; nalugatik kaujillutik amma allatausimangituk; malunnaaluattilugit isumagijauluattut sivugagijangit; ammalu pikujalianguttitaullutik ajunnanginitsauniammata atuinnaguttitaulligunillu.

3.0 Area of Focus/Ininga Takunnâtaujuk

Within Labrador Shelf offshore area, the Nunatsiavut Government has certain duties and powers, as defined by the *Labrador Inuit Land Claims Agreement* (the Agreement), in The Zone and in the Area Adjacent to the Zone¹. The chosen area of focus, the Labrador Shelf SEA Area, as identified in Figure 1, will include all marine waters east of the low water mark out to the 200 nMi Exclusive Economic Zone under the jurisdiction of the C-NLOPB. Those areas of the Zone and the Area Adjacent to the Zone that fall within this area are captured in the Labrador Shelf SEA Area. For clarity, the area commonly referred to as the Lake Melville Area will only include those marine waters that are eastward of the low water mark.

Iluani Labrador Kulivitsivingata imappigalangani, Nunatsiavut kavamanga kamaluagialik pitsatuniKadlunilu, oKattaumata Labrador Inuit Nunamik Satusainnimut Angikatigegutik (tâмна Angikatigegutik), Zonenganejuk amma Tamânegalak Saniani Zonengata. Annigijaujuk tamânegalak takunnâtaujumi, Labrador Shelf SEA Area-mi, sollu alatausimajuk Figure 1-mi, pitakaniattuk ilonnainik imaup imanginnik kitâni tinisimajob nalunaikkutangani tikidlugu 200 nMi Attutauganilu Avatinga Zonemut aulataummat C-NLOPB-mut. Tamakkua inigalait Zonemi amma Inigalak Atajuk Zonemut atangammat iluanut tapsuma tigujaumajop iluani Labrador Shelf SEA Area-nut. Tukisitsiataunninganut, inigalak kaujimajautsainatuk sollu Lake Melvillemik kisimik ilakaniattut tamakkuninga imappigalannik kitânettunik tinikattatop nalunaikkutangiinni.

The terms 'offshore' or 'offshore area' refer to the jurisdictional area of the C-NLOPB. The Accord Acts define 'offshore area' as: *“those submarine areas lying seaward of the low water mark of the Province and extending, at any location as*

¹ The Zone and Area Adjacent to the Zone are defined in the Agreement.

far as (a) any prescribed line, or (b) where no line is prescribed at that location, the outer edge of the continental margin or a distance of two hundred nautical miles from the baselines from which the breadth of the territorial sea of Canada is measures, whichever is greater.”

Tamakkua tukiKattitauningit ‘imappik’ ugvalu imappimejut’ ilingajut kamagijauninginnut iningani C-NLOPB-kut. “târna Accord Maligatsasuanguninga tukiKattisijuk ‘imappimejut’ sollu: “tamakkuninga akkatonut inigijaukattatunik inillangadlutik imappimongadlutik tiniKattaninganut tikidlugu Provinciup amma sittugialladlugu, namutuinnak tikiffinganut Kaningininganut sollu (a) nalianutuinnak allatausimajumut sittungajumik, ugvalu (b) sittungajuKangitumut aivigisimajanganut, silatianettuk killinga nunangata killinganut ugvalu Kaningininganut two hundred nautical miles pidlutik pigiasiffiminit pigiasidlutik territorial imappinganit Canadaup Kanuk takitigimmangât, nalliatuinnanganut anginitsautuappat”

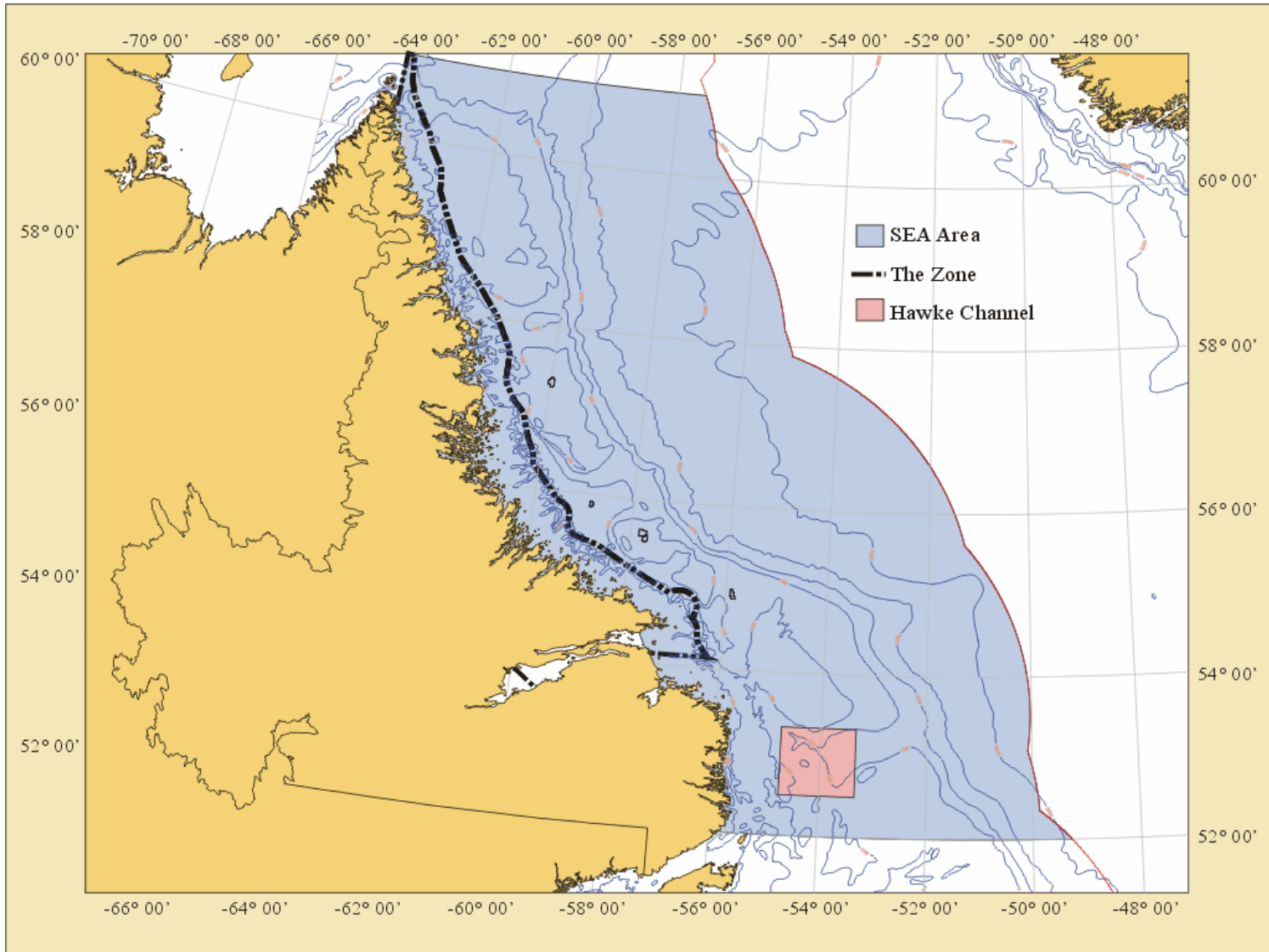


Figure 1 – Labrador Shelf SEA Area
Figure 1 – Labradorimi Kulivitsivangata SEA Ininganigalak

4.0 Working Group/Suliakakatigejut

This draft scoping document was drafted by C-NLOPB staff with the assistance of a Working Group. The Working Group is co-chaired by the C-NLOPB and the Nunatsiavut Government and consists of members of the Nunatsiavut Government, federal and provincial government agencies, local Regional Economic Development Boards, the fishing industry, and non-governmental organizations. The purpose of the Working Group is to assist the C-NLOPB in the development of the SEA through the provision of technical advice regarding scope and content of the SEA, and public consultations.

Una sivullik takujaukkujak atuagak akkisuttaulauttuk C-NLOPB suliakakattinginnut ikajuttaudlutik Suliakakatigejunginnut. Tamakkua Suliakakatigejungit itsivautakadlutik C-NLOPB-kunit amma Nunatsiavut Governmentinganit ammalu tamânettukadluni ilaliugutilinnik Nunatsiavut Governmentinganit, canadaup provinciulu governmenteginnit, tamânelu kanitagennit kenaujaliuttinit Pivallianimmut Angajukkaukatigenginnit, oganniatinit, ammalu governmentiungitut katutjikatigenninginnit. Tamânelauttuk Suliakakatigejungit ikajuniagamik C-NLOPB pivallianitsanganut SEA, amma inulimânik okaudjuikattagamut.

5.0 Objectives/Piusigigumajangit

Within the Labrador Shelf SEA Area, the SEA will:

Iluani Labrador Kulivitsivingata SEA Inigalangani, Sea piniattuk

- Provide an overview of the existing environment;**
- Kaujitsiluni kanuilingalimmangât mâna avatigilittanganik;**
- Generally describe typical offshore oil and gas exploration activities**
- Taimagalatuinnak okalautikalluni imappimi utsualunnut amma gasinut kinijattuKalinninganik**
- Generally describe typical offshore oil and gas production activities**
- Taimagalatuinnak oklautikalluni imappimi utsualunginnik gasinginnilu pitâllianimmut sugukalimmat**
- Describe and evaluate potential environmental effects associated with offshore oil and gas exploration activities;**
- Okalautikalluni ammalu kamallutik kanuk pigajammangâta avatinginnut attuigunik mitsâgut imappimi utsualummik gasimillu kinijalippata;**
- Identify knowledge and data gaps;**

- Sunautsiamangâta kaujillugit amma allalugit puiguttausimajut;
- Highlight issues that may be of concern;
- Malunnatiluallugit sunait isumagijauluagajattut;
- Identify areas of interest or sensitive areas;
- Sunaummingâta ikkagijaunitsait ugvalu sujausâdilasogalait;
- Make recommendations for general mitigative measures that should be employed during offshore petroleum activities;
- Pikkujaliullutik mitsânut sujaugiagalattunik suliagijaujutsaujunik taipsumani imappimi utsualunnianimmut suliakajukagiasippat;
- Identify, where appropriate, areas requiring enhanced levels of mitigation; identify, if feasible, the level of enhanced mitigation required
- Sunaummingât kaujillutik, nani nammatumik, ininginnik sujaugiaammangâta;
- Identify general restrictive, or monitoring, measures, as appropriate, that may be required for future offshore petroleum activities; and
- Sunaummingâta kaujillutik aiviugiaakangitunik, kamagijaugialinnilonnit, atuttaugialinnik, nammapata sollu, atuttaugiaakagajappata sivunitini imappimi utsualuligijunut; amma
- Assist the Board in determining whether exploration rights should be issued in whole or in part in the Labrador Shelf SEA Area.

Ikajullutik Angajukkaukatigenik kajusigiasippata nalliagut kinijannimut pivitsatâgiamik tunitsigiasigunik ilonnânik ilanganituinnanganillonet iluani Labradorip Kulivitsivingani SEA Inigalangani.

6.0 Past and Present Oil and Gas Activities/Siagu amma Mâna Utsualuit Gasinullu Sujausimanningit

Past exploration activity in the Labrador Shelf SEA Area has consisted of the collection of approximately 149,233 line km of 2D seismic data from 1968 to 2005. The most recent seismic program undertaken in the area was in 2006, whereby approximately 10 844 km of seismic data was acquired. Exploration drilling commenced in the 1970's. Between 1971 and 1985, 26 exploration wells and 2 delineation wells were drilled on the Labrador Shelf. With the discovery of natural gas at a number of these exploration wells, five significant discoveries licences (SDLs) were granted by the Board. The five SDLs represent a total of

4.244 trillion cubic feet (TCF) of natural gas reserves. There are no Exploration Licences (ELs) or production licences within the Labrador Shelf SEA Area (see Figure 1).

Siagu kinijattukammat Labrdorip Kulivitsivingani SEA Inigalangani Kinijafiulauttuk katitsuidlutik akunganigalak 149,233 line km of 2D nunak sajukallasimanningit allataummata pigiasidlutik 1968 tikidlugu 2005. Kaninnipaulauttuk nunak sajukallaniganut suliak kamagijaummat inigalangani 2006-tillugu, taipsumani tamânigalak 844 km nunak sajukallasimanninginnik allataummata pitâttaulauttuk. kininniup putogedlutik pigiasilauttuk 1970-tini. Akungani 1971 amma 1985, 26 kinidlutik utsualunnik amma 2 nalunaikkutattâdlugik utsualulet putogilauttangit Labradorip Kulivitsivingani. Nagvâgamik gasimmagimmik unuttugalanni tamakkunani Kinijafimini utsualulinnik, tallimait nalunangitut pitalet laisansingit (SDLs) tunijaulauttuk AngajukKauKatigenginnut. Tamakkua tallimait SDLs kivkatunilet iluingadlugit 4,244 trillion cubic feet (TCF) gasimmagilinnik. Pitakangilak kinijanimmuk Laisansinik (Els) ugvalu sakkititsivallianimmuk laisansinik iluani Labradorip Kulivitsivingani SEA Inigalanginni (takullugu Figure 1).

The Board has not held a call for bids in the Labrador Shelf SEA Area in the history of the Call for Bids cycles.

Tamakkua AngajukKauKatiget tigumialaungitut pigumammata salakkutiukataugiamut akinganik iluani Labradorip Kulivitsivingani SEA Inigalangani siagutsuanit tamakkua Pigumammata Salakkumiutimmik kaivallaigutiukattanininnit.

7.0 Scope of SEA/Takunnâtanga SEA

The SEA will describe all foreseeable offshore oil and gas exploration activities in the Labrador Shelf SEA Area. It will examine the project-environment interactions associated with these petroleum exploration activities. Exploration activities to be considered in the SEA include exploratory and delineation drilling, seismic survey activities (2D, 3D, vertical seismic profiling, geohazard surveys), geotechnical surveys, and wellsite abandonment. The focus of the SEA will be on activity and interactions of those activities in the Newfoundland and Labrador offshore area. However, where information exists, the coastal environment will be described and the project-environment interactions identified and discussed.

Târna SEA okâlatsianiattuk ilonnainik nigiugijaujunik imappimi utsualunginnut gasinnulu kinijattaujunut Labrador Kulivitsivingani SEA Inigalangani.

Kimiggulunilu suliap-avatigalanginnik utittalippata katujikatigenginnanut tamakkutigona utsualunnik Kinijatillugit. Kinijajut sulippata isumagijaukkujait iluani SEA ilagillugit Kinijannik ammalu nalunaikkutattâtuinnik putogijait, nunak sajullakasimanninginnikt Kinillutik (2D, 3D, nunak sajulla kattanninganut kamagillugit, ininginnut piungitosot Kinillugillu), nunanga kagitaujakkut kimiggulugu, amma utsualummik kinijaviusimajut kimattautuinnagiasippata kamagillugit. Takunnâtanga SEA suligijaulippat amma utittaviulippat tamakkua sugalalippata Newfoundland Labradorimillu imappinganigalak.

Taimaigaluattiluguli, nani kaujivallianiKajuni, satjugiangani avatingata okattausianiattut ammalu suliap-avatinga utittaviujut sunaummangâta ammalu ukalautaunialillutik.

The extent of exploration activity will be estimated based on historical activity in the area and the potential for future exploration activity, to the degree that this can be foreseen. Generic types of production facilities that could be employed in the Labrador Shelf SEA Area will be identified and their potential project-environment interactions briefly discussed.

Tamanna sittunganinga kinijafiujuk kanuk angitigimmangât kaujijaulluni iningatillugu mitsânut siagutsuanit piusigijausimajanginnut tamânigalak ammalu kanuk piniammangât sivunittini kinijukagiasimmipat, tikillugugalak tamanna takujausonguniammat sivungani. Kingulliget sunait sakKivalliatunut iningit suliannut tigullatausot iningani Labrador Kulivitsivingani SEA Ininganigalak kaujijaullâtut amma sunauniammangâta suliap-avatingit utittaviulippat naittumik ukalautauniammata.

Predictions concerning types and quantity of likely production facilities will be undertaken in general terms. The discussion will focus on existing Significant Discover Licences in the area, and known and feasible production scenarios.

Sivungagut kaujimajaugumanningit isumagillugit sunauniammangâta ammalu katsiuniammangâta sakKivallianiattut initsangit suligijauniattut kamagijautuinnaningigut. Ukalautaunninga takunnâlugu tamâneligettukut Nagvâmaginimmut Laisansingitigut tamânegalak, kaujimajangillu amma akunik sakkittitsikattanianningit isumagillugit.

7.1 Spatial and Temporal Boundaries/Initsak Mânnatuinnalu killingit

The spatial boundary for petroleum related activities to be considered in the SEA is shown in Figure 1. The Labrador Shelf SEA Area is bounded in the south by the Orphan Basin SEA area. The eastern extent is bounded by the 200 nmi Exclusive Economic Zone and the western boundary ceases at the coast of Labrador to the low water mark.

Tamakkua initsait killingit utsualuit mitsânut kiniligunik isumagijaujutsait iluani SEA takutsait Figure 1-mi. Tamna Labrador Kulivitsivinga SEA Inigalangani killilik sikingani saniani Orphan Basin SEA - galak. Tapsuma kitânga kilinganejuk 200 nmi Exclusive Economic Zone nalunaikkutaliuttausimanningani ammalu kangianettuk killinga nâsimajuk satjugiangani Labradorip tikidlugu tinisimajop nalunaikkutanganut.

The SEA will include the offshore petroleum exploration activities, as described in the preceding section, which may occur in the Labrador Shelf SEA Area within the next ten years. The SEA will be reviewed in at least five years to determine whether an update is required.

Tâmn Sea ilakaniattuk imappimi utsualunnik kinijalippata, sollu ukattaukaummata sivullingani, sakkigajammimatali iluani Labrador Kulivitsivingani SEA Inigalanginni iluani senait jaringinni. Tâмна SEA kimiggutaugiallanilik allât tallimani jârine kaujigasuumut kamagijaugiakammangât suvallianinga.

7.2 Factors and Issues to be Considered/Kaujimajat Isumagigatsailu Isumagijaugialet

The focus of the SEA will be a “Valued Ecosystem Component” (VEC) approach. Each VEC (including components or subsets thereof) will be identified and the rationale for its selection provided. VECs will be determined based on consultations with interested stakeholders, the public, and regulatory agencies. At a minimum, VECs will include: fish and fish habitat (including benthic habitat); commercial fisheries, traditional Aboriginal fisheries, marine mammals and sea turtles; waterbirds (including seabirds, waterfowl, shorebirds); species at risk; and sensitive/special areas. Traditional Knowledge will be incorporated, where appropriate. Within each of these general categories, species of importance to the Labrador Shelf SEA Area (e.g., species-specific commercial/aboriginal fisheries, species of ecological importance) will be emphasized.

Takunnâjak SEA imailinganiattuk “Valued Ecosystem Component” (VEC) taillugu. Atunnit VEC (ilagillugit pitangit ugvalu taijaugiallatut tamâni)

sunammangâta KaujiKattalugit amma summat tigullatausimammangâta pitâgijaujut. VECs Kaujimajauniattuk tungatillugu Kaujititausimanningitigut tapkunangat ikKasujunit kenaudjagiamut, inulimânit, ammalu tamânguluak suliaKaKataugumajunit. Mikinippângutillugu, VECs pitaKalluni: ogannik ininginnilu (kamagillugit natinganejut); kenaudjanimmut ogannianik, siagutsuanit NunaKakKasimajut oganniasimanningitut, imappimi ogangit ammalu turtlenut; imammetut tingmiat (imappimettulu, imammiutait, sitjamiutait); adjigengitut anajanattut; amma anajanattut/annisagaittut ininginni. Siagutsuanit piuset Kaujimajaujut pimmagiuttitaullutik, nallinginni nammagijauppata. Iluani atunnit tamakkua atautsikâllugit, adjigengitut omajuit timmialonnet ikKagijait tamatsumunga Labrador Kulivitsivinganut SEA Inigalangani (sollu., sunait-adjigengitut kenaudjatiugutet/nunakakkasimajut oganniasiutingit, sunagalait tamânetsainatut ikkagijait) kamagijauluakattaniattut.

The SEA report will include the following:

Tâмна SEA Kaujisautinga ilakaniattuk ukuninga:

- Historical overview of offshore petroleum exploration activity in the Labrador Shelf SEA Area and a discussion of regional offshore oil and gas activities in the NL offshore area.**
- Siagunitatut takunnâlugu mitsânut imappimi utsualutsiunimmik suligijaulippat Labrador Kulivitsivinga SEA Inigalangani amma okalautauilluni tamânigalak imappimi utsualummik gasimillu kinilippata NL imappigalangani.**
- Overview of typical offshore petroleum exploration activities (well site surveys, vertical seismic profiling, 2D/3D seismic, geotechnical programs, exploration drilling (including onshore to offshore drilling), well abandonment) and methods to carry out these activities;**
- Takunnâlugu taimâlluasiak imappimi utsualunnik kinijattukalippat (utsualuit ininginnik kimiggulutik, napatillugu nunak sajukallasimanninganik takunnâlugit, 2D/3D sajukallavimusimajut, kagitaujakkut suligillugit, kininimmut putogillutik (tapkualu nunami tikillugu imappik putogigunik), utsualuliufingit kimattaugiasippata) amma piusikallutik kamagiamut tamakkuninga piusigijauniattunik;**
- Brief discussion of production alternatives that could be employed in the Labrador Shelf SEA Area;**

- **Naitukut okâlallutik sakkivalliajuit kanugiallak sakkivalliagajammangâta suliajiausongulittilugit tamâni Labrdor Kulivitsivingata SEA Inigalangani;**
- **Description of the physical and biological environments in the Labrador Shelf SEA Area based on existing information and data, and Traditional Knowledge. Data gaps will be highlighted. Factors to be included are outlined in the Sections 5.2.1 and 5.2.2;**
- **Okatsialugit sunaummingâta iningit sunait ammalu tamanimiutait avatingit tamâni Labradorip Kulivitsivingani SEA Inigalanginni kaujisimajangit kaujisautinnit allatausimajunit, amma Siagunitanik Kaujimajunit. Alakkasajammengit takutsautitautesialutik. Kaujimajait ilijaullutik takutsausiangutillugit llangani 5.2.1 amma 5.2.2;**
- **Description of other marine activities in the Labrador Shelf SEA Area (e.g. fisheries, aquaculture, marine transportation);**
- **Kaujitsialugit asingit imappimi sugalattut iluani Labradorip Kulivitsivingani SEA Inigalangani (sollu., ogannianimmut, pigutsenimmut, umiattigogiakaligamillu);**
- **Project-environment interactions of the VECs in the Labrador Shelf SEA Area will be identified and qualitatively assessed;**
- **Suliap-avatingagut utittajukalippat tamakkununga VECS iluagut Labrador Kulivitsivingata SEA Inigalangagut sunaummingâta kaujillugit ammalu kaujillugit kanuk piujonikammangâta;**
- **Identification of general mitigative measures and monitoring measures that might be considered for offshore activities. Specific or ‘non-typical’ mitigations that may be required to address specific concerns will be highlighted;**
- **Sunaulimmangâta kamagillugit sunagalait atuttausongunitsangit ammalu kamagillugit sulimmangâta isumagijausonguniammata imappimi kanuiniangimangâta-lonnet. Tapkuangutsiatillugit ugvalu ‘taimatsai-naukattangit’ sujaunninginnut sollu kamagijaugiakaligunik kanga sunamut isumagijaullutik malunnasiangutitaullutik allalugit;**
- **Identification of areas requiring enhanced, or ‘non-typical’ mitigation measures**
- **Sunaummingâta inigalait piunitsautitaugialet, ugvalu ‘taimatsai-naukattangit’ kamagijaukattalutik;**

- General discussion of effects and mitigation of potential accidental events, as well as malfunctions associated with offshore oil and gas exploration activity;
- Okalautigijautuinnalutik sugajammangâta ammalu isumagillugit siagu pijakkumiungituk sakkigajappata, ammalu sollu sikumijukagajappat mitsânut imappimi utsualunni gasinillu kinijatillugit tamânigalak;
- General discussion of potential cumulative effects associated with multiple offshore oil and gas activities in the Labrador Shelf SEA Area based on an estimate of potential exploration activity derived from historical offshore petroleum activities in the area, and in consideration of offshore oil and gas activities within the NL offshore area; and
- Okâlautigijautuinnalutik kingungani sugajattut mitsânut unuttugalanni imappimi utsualuit gasellu suligijautillugit iluani Labrador Kulivitsivingata SEA Inigalangani takunnâlugu angininga siagu kinijattuni suliakadlutik

Itjasiligunik siagutut imappimi utsualunnik suliakaligunik tamânigalak, ammalu isumagijautillugu imappimi utsualuk amma gasimut kinijadlutik iluani NL imappigalangani; amma

- For each factor identified below, discuss potential planning implications/considerations which may have to be considered in site-specific EAs (i.e., need for additional data, special mitigations).
- Atannut tamaita sunaummangât kaujijaugami atiani, okalautigidlugu siagu atuinnguttisiligunik sugajanningit/isumagijaunitsangit sollu isumagijauluagajappata iningani sunaummangâta Eas (sollu., atugiallatâgiamut ilagiallalugit alakkasâjanginni, kanutsiak plusikannisaugajammangâmmik).

Detailed ‘effects assessment analyses’, including determination of significance pursuant to the *CEA Act*, will not be undertaken in the SEA. A determination of significance can only be undertaken at the project specific stage where detailed information respecting project activities and scheduling are known.

Iluingasiamagillugu ‘takutitsinik kanuk sulimmangâta’, atugialladlutik utsitugiamut tapkunungatsiamagit CEA Maligatsasuanginnut, atuttauniappalaingimat iluani SEA. Utsitugianga tapkunungatsiamagik kisiani atuttausok taipsumani suliak tikitsiamagippat tikivinganut nani allatausimajunut kaujisautinni suttailidlugu suliak suligijautillugu amma kanga pigiasijauniammangât kaujijautuappata.

Mitigation measures currently in practice to reduce or eliminate potential effects will be described for activities that may affect the physical and biological environments and VECs. Specific or 'non-typical' mitigations that may be required to address specific concerns will be highlighted, in particular, specific mitigations proposed for any special/sensitive areas identified within the Labrador Shelf SEA Area. Residual effects remaining after the application of routine mitigations will also be described.

Kanuk piusikanialimmangâmmik mâнна uttulutik pittailigasuumut ugvalu sakkiviunianginamik siagugiak ukattausianiattut sugalalippata attuigajanningit timinginnik amma umajunginnik avatingani ammalu VECs-mik. Sunammagik ugvalu 'taimâtsainauKattangit' piusiuKattatut atugiakaniappata kamagigiangit isumagijauluattukut takutsasiangutitauniattut, piluallutik, takkuamaget piusikakujajut nallinginnut kamagijaukkujajunut/anajanattunullu inigalanginni kaujimajajuni iluani Labradorip Kulivitsivingani SEA Inigalangani. Katagattausimajut tamaungagalak iliukkaigegunik piusigijamminik amma ukâlautigijautsianiammijut.

The SEA will consider the following environmental factors and issues, as a minimum, with emphasis upon factors unique to the Labrador Shelf SEA Area. Sufficient supporting information will be provided, or referenced and summarized if it already exists in publicly available publications. Substantive uncertainties or information gaps will be identified.

Tâmma SEA isumanikaniattuk ukuninga avatinganut atajunik isumagijauluattunillu, sollu mikinippâmik, atullutik Kaujimajajunik atummagittunik mitsânut Labrador Kulivitsivinganut SEA Inigalangani. Nammatumik ikajuttaugutet kaujijausimajut ukattaulutik, ugvalu utigviukattalutik ammalu sunaummangâta sollu tamâneligepata inulimânut atuattausongutillugit. Kaujimajautsiatut nalunanningit ugvalu Kaujijausimangit sunaummangâta Kaujjauullutik

7.2.1 Physical Environment/Nunangatalu Avatinga

A general description of physical environmental factors in the Labrador Shelf SEA Area will be presented, with emphasis upon the following:

Sunaummangâta ukalautigillugit nunanganettut avatingata ilauni Labrador Kulivitsivingani SEA Inigalangani, ukalautigiluallugit ukua:

- **Meteorology and climatology (extreme events, average temperatures, seasonal variations);**
- **Silanga pillugu ammalu unanninganut nillatâninganullu (suluadlasongunnanganut, unannituinnangnut nillalippalu, nalliunginginni sukattamangât);**
- **Geology, including a discussion of the potential for seismicity/geohazard events and their impacts on slope stability in the Labrador Shelf SEA Area;**
- **Kimiggulutik ujanganginnik sunaglanginnilu asinginnik, uKalautikallutillu siagugiak nunak sajukallagajappat/sugajattunik ammalu attuigajanninginnik iniKatsianinganik Labrador Kulivitsivingani SEA Inigalangani;**
- **Oceanography(wind, waves, extreme events); and**
- **Imappingata mitsânut(anugik, malet, sudlajukalippat); amma**
- **Sea ice and iceberg conditions (historical overview, seasonal variability and current trends).**
- **Imappimi sikungit amma pikalujangita ilupsingit (siagunitakkut takunnâlugit, nalliuninginni adjigenginingit ammalu mâna sulimmangâta).**

7.2.2 Biological Environment /Ilupsingata Avatinga

An overview of the biological environment in the Labrador Shelf SEA Area will be presented, with emphasis upon identified VECs. For each of the following, the biological descriptions should be consistent with the level of detail presented for each species. Overviews of species (distributions, critical life stages, and important areas) should be presented in the context of their relevance to the Labrador Shelf SEA Area and of the potential for interaction with offshore oil and gas activities. This description will be based on available information and will include, but not be limited to:

Kimiggulugu ilupsingata avatinga iluani Labrador Kulivitsivingata SEA Inigalangani takujatsauluni, ukalautigiluallugit sunaummingâta VECs. Atunnit ukua, ilupsingata sunaunningit adjigengatillugit pusiKagialet sollu iluingatillugit ukalautigijauningit tamainnut adjigengitunut omajunut timmianullonet. Iluingalugit adjigengitut omajuit adjigenginingit (siammatitauningit, anajanalimmata kanga omanningit, ammalu ikkananingit

inigalangit) takutsaujutsait ukalautaujumi mitsagut Labrador Kulivitsivinga SEA Inigalangani amma siagugiak utittatukalippat imappimi utsualunnik gasinillu suliakajukalippat. Tamanna ukalautaunna tungatillugu pitâgijausimajunik kaujisautinnik amma ilakallutik, kita nâtuinnanikalugatik ukununga:

- **Finfish and Invertebrate species – for those species identified in Labrador Shelf SEA Area; focus on commercially important and emerging fisheries**
- **Tikkagutilet amma Kujapigakangitut ogagalait – tamakkununga adjigengitunut kaujillutik iluani Labrador Kulivitsivingani SEA Inigalangani; takunnâlugu kenaudjatauvisanut ikkagijauluattuni ammalu oganniagiasijukagajappat**
- **Fish habitat (including benthic habitat) for those species identified in LSSA**
- **Ogait ininga (taillugulu natinga imaup inigijaukattatuk) tamakkununga adjigengitunut ogannut takujausimajunik LSSA-mi.**
- **Commercial fish species;**
- **Kenaudjajunut oganniataukattatut;**
- **Traditional Aboriginal fisheries**
- **Siagutsuanit Nunakakkasimajut ogannianingit**
- **Marine mammals and sea turtles;**
- **Imappimi omajuit amma turtles;**
- **Waterbirds (including seabirds, waterfowl, and shorebirds);**
- **Imappimiutait timmiat (taillugit imappimiutait, imammesot, amma sitjamiutait);**
- **“Species at Risk”; and**
- **“Adjigengitut Anajanattut”; amma**
- **Sensitive/Special areas.**
- **Annisagaittut/Piluattuni inigalanni.**

The following provides a detailed listing of information that will be captured within the SEA.

Ukuagalait pitâttuisot tulligenik takutsasianik kaujisautinik tigullatausonik iluani SEA.

- **Coastal/Shoreline Environment/Satjugiami/Sidjami Avatinga**
 - **An overview of the coastal/shoreline environment in the Labrador Shelf SEA Area with specific emphasis on special or unique habitats or places (e.g., parks, protected areas, fish spawning habitat, important bird areas, shoreline sensitivity information).**
 - **Takunnâlugu satjugiak/sidjami avatinga iluani Labrador Kulivitsivinga SEA Inigalangani isumagiluallugit piluattut ugvalu inigijautsainatut inellonet (sollu., silakkijaffet, paigijaujut inigalangit, suvailijalimmata iningit, ikKanattut timmiat inigikattatangit, sidjait pillugit kaujimajaugialet).**
- **Plankton**
- **Puttangavik**
- **Benthic Invertebrates (including commercial shellfish species)**
- **Puttangasot kujapigakangitut (taillugit kenaudjaliugutiukattatut adjigengitut)**
- **Finfish and Marine Invertebrates:**
- **Tikkagutilet amma Kujapigakangitut:**
 - **Overview of finfish and marine invertebrates in Labrador Shelf SEA Area, with focus on commercially important and emerging fisheries; information will include a summary of critical life stages; and locations of habitat supporting these life stages, if applicable to the Labrador Shelf SEA Area**
 - **Takunnâlugit tikkagutilet amma kujapigakangitut iluani Labrdor Kulivitsivingani SEA Inigalangani, takunnalugillu kenaudjaviuluakattatut amma oganniagiavalliajut; Kaujisautik pitakaniattuk sulimmangâta omanningita pivallianigikattanganik; amma inigikattatanginnik ikajunikkut tamakkua omanningita pivallianinginnut, sollu atutillugu Labrador Kulivitsivinga SEA Inigalangani**

- **The identification of known spawning, feeding, migratory and essential habitats, including coastal areas (where information exists) within the Labrador Shelf SEA Area, for the species described above ;**
- **Kaujimmata kaujimajaujumik suvaliugiasimmata, nigikkainimmut, aullagiasinningit ammalu inigiluakattatanginnut, ilagidlugit satjugiamegalattut (nani kaujijausimanninginnit) iluani Labrador Kulivitsivingata SEA Inigalangani, tamakkununga adjigengitunut okalautaukkaumata sivullimik;**
- **Summaries of finfish and marine invertebrate habitat in the LSSA particularly those supporting fisheries;**
- **Pijagettauningit oKalautigijaudlutik tikkagutilet ammalu imappimejut kujapigaittut iningit iluani LSSA tamakkunungauluak ikajujunut oganniakattatunik;**
- **Commercial, Recreational and Aboriginal Fisheries/kenaudjaviunik, Ogannianguannik amma Nunakakkasimajutut Oganniavingit**
- **Overview of Historical, present and potential future commercial fisheries within the Labrador Shelf SEA Area, including species under moratoria;**
- **Takunnâlugit Siagunitatut, mânnatut amma siagu sivunittini kenuadjanikkut ogannianimmik iluani Labrador Kulivitsivinga SEA Inigalangani, taigiallugit adjigengitut ogagalait taipsumani nukKatitauniannigâlimmata ogannianet;**
- **Description of commercial, recreational and aboriginal fisheries in Labrador Shelf SEA Area. This description should include a summary of historical fisheries.**
- **Sunaummangât kenuadjaviukattatut, ogannianguaviuKatatut amma nunakakkasimajut oganniavingit iluani Labrador Kulivitsivingani SEA Inigalangani. Tamanna sunaummangât**

ukalautauninga ilalik iluingadlugu siagunit oganniaviukattasimajunik.

- **General description of fishery activity including species, location, vessel size, gear type, timing**
- **Sunaumamngât ogannianimmut sunningit ilakatillugu adjigengitunik ogannik, ininginnik, umiat angininginnik, atugialinginnik, sidontinganillu**
- **Aquaculture activities, if present, should be described**
- **Pigutsainik sugalatillugit sollu mâna pigutsaipata, ukalautaujutsaumijut**
- **Waterbirds/Imammesot timmiat**
 - **Overview of species present in the Labrador Shelf SEA Area and their distribution, including seabirds, waterfowl, and shorebirds. This discussion will include a description of critical life stages, lifestyles and life histories relevant to the SEA.**
 - **Ukâlautigillugit adjigengitut tamânejut iluani Labrador Kulivitsivingani SEA Inigalangani amma siammatitaukattaningit, ilagillugit imappimiutait, imammiutait, amma sidjamekattatut. Tamanna ukâlautigijak ilakaniattuk sunaummangânnut kappianttolippata umanigalanginni, piusingit umadlutik amma umasiutinginnik siagunit tamânedlutik SEA- mi.**
- **Marine Mammals and Sea Turtles/Imappimi Omajuit amma Imappimi Turtles**
 - **General description of marine mammals and sea turtles that may be present in the Labrador Shelf SEA Area**
 - **Sunaummangâta uKalautigituinnalugit imappimi omajuit amma turtles tamânegajappata iluani Labrador Kulivitsivingata SEA Inigalangani**
 - **Distribution of species, including lifestyles, life histories and important areas within the Labrador Shelf SEA Area**

- Siammatitauningit adjigengitut ogagalait, taillugulu inosigikattangit, umakattaningit siagunit ammalu ikkanattut inigalangit iluani Labrador Kulivitsivingani SEA Inigalangani
- **Species at Risk/Adjigengitut Anajanaluaattut**
 - Description of Species at Risk, and critical habitat, as described in the *Species at Risk Act*, COSEWIC, and by the Government of Newfoundland and Labrador that have been identified, or are believed likely to be present, in the Labrador Shelf SEA Area.
 - Sunaummangâta Adjigengitut Anajanaluaattut, amma kappianatsimata iningit, sollu ukattaumata sunaummangâta ilanginni *Adjigengitut Anajanaluaattut Maligatsuanginni*, COSEWIC, kavamangani Newfoundland Labradorilu kaujjausimadlutik, ugvalu uppigijaudlutik tamânenningit, iluani Labrador Kulivitsivingani SEA Inigalangani.
- **Sensitive/Special Areas/Anajanattut/Inigalagiluattangillu**
 - Description of sensitive or special areas in the Labrador Shelf SEA Area. These can include, but are not limited to: rare or unique habitats; important bird areas; fish spawning habitat/migration routes; marine mammal migration routes; rare or unique plant species; areas of high productivity; Torngat Mountains National Park Study Area, National Parks, and Marine Protected Area designations; two Areas of interest under the National Marine Conservation Area (Nain Bight and Hamilton Inlet).
 - Summangâta ânnitausagailuaattut ugvalu inigalagiluattangillu iluani Labrador Kulivitsivingani SEA Inigalanginni. Tamakkua ilakasot, kitali atutuinnangitut ukununga: takujautsainangitunut ugvalu inigijautsainangitunullu siagunit; ikkanattut timmianut inigalait; ogait suvaliulippata inigikattatangit/utigviukattatut apkutingit; imappimi omajuit utittagamik apkutiukattatut; takujautsainangitut ugvalu sakKisialautsimangitut pigutsiangit adjigengitut; inigalangit sakkivalliamagilimmata; Torngat Kakkasuanginni National Park Study Area, National Parks, amma Marine Pairijauningigalangit nalunaikkutanginnut; maggok Inigalâk ikkagijaujok tamakkununga National Marine Conservation Inigalangani (Nain Bight amma Hamilton Inlet).

- **Human Use/Inunnut Atuttaukattatut**
 - **Description of traditional and cultural activities in the Labrador Shelf SEA Area. These include but are not limited to: travel routes, hunting, gathering and other domestic harvesting activities.**
 - **Sunaummangâta piusitukait amma ilusitukait atuttaukattatut iluani Labrador Kulivitsivingani SEA Ininganigalak. Tamakkua ilalet kita nângitut ukununga: ingikaviukattatukut, pinasuannimut, katitsuinimmut amma asingitigut anggigamut katitsuilippata atuniattaminik.**
 - **General overview of marine recreational and tourism activities in Labrador Shelf SEA Area**
 - **Ukalautigituinnalugu imappimi oganniangujukalippat amma niuggukattatut sulippata iluani Labrdor Kulivitsivingani SEA Ininganigalak**

- **Marine Commercial Traffic/Imappimi kenaudjajunut Utittaviuninga**
 - **Overview of commercial traffic activity within, and through the Labrador Shelf SEA Area**
 - **Ukâlautigillugu kenaudjajut utittaviuninga iluani, amma iluagut Labrador Kulivitsivingani SEA Inigalangani.**

7.2.3 Project-Environment Interactions/Suliak-Avatinganut Utittanik

For each of the identified VECs, a description of the interactions of petroleum exploration activity with the environment will be presented. Proposed activities include:

Tamainnut Kaujimajta VECs-et, sunaummangât utittaninginut utsualummik kinijallutik avatinganullu ukâlautauniattuk. Apigiutausimajut ilaKaniattut ukuninga:

- **Seismic data collection;**
- **Nunak sajukallamat allatausimajut katitsutaummata;**
- **Exploratory/delineation drilling (e.g., mobile offshore drilling unit (semi-submersible or jack-up rig), onshore to offshore drilling), and ancillary activities;**

- Kininimmut/nalunaikkutattâtuinimmut putugedlutik (sollu., nujausot imappimi putugidlutik pitangit (puttasok-kivisok ugvalu jack-upitasollu), nunami imappimillu putogesok), amma asigalanginnut atuttausungudluni;
- Vessel traffic (e.g., supply vessels, seismic vessels, helicopters); and
- Umiat utittaninginnut (sollu., usijut umiat, aulatjaisot umiat, helicopters;) amma
- Well abandonment operations.
- Utsualutsiuvimminik Kimaituinnagiasippata kamanninginnut.

Typical project-environment interactions associated with generic petroleum production activities will be briefly discussed for completeness.

Taimaittusainait suliat-avatinganut atuttaukattatut atatillugit utsualuliunnimut naittotillugit ukalautauniammijut pijagetsiagutigillugu.

Potential project interactions include, but are not limited to the following:

Siagugiak suliatsaugajattut utittaviutillugit ilakaniattut, kita tikituinnalunnagit ukununga:

- Noise/disturbance (e.g., seismic survey activities, noise from drilling installations) issues on marine mammals, sea turtles and sensitive life stages of commercial fish/shellfish species ;
- Piffalunnik/pikablânik (sollu, sajuppilânnik, pikallânik putogijut sanalippata) isumagijaujunnut imappigalait omajunginnut, turtlenut amma anajattunut inosinginni kenaudjasiunimmut oganiatut/kujapigaittunut
- Benthic habitat disturbance;
- Natingani imappiup inigijaukattatuni paffisâllutik
- Coastal interactions (including fish/bird habitats, sensitive areas);
- Satjugiagalakkut utittalutik (ogannut/timmiat ininginnik, anajattugalanni);
- Air quality issues;
- Silatsiangunik isumagijaulluni;
- Operational discharges and the effects on water and sediment quality ;
- SuliaKalimmata katagattaukattatut amma atuimata imannik ammalu ujugagalannik piungilitsilluni;

- **Accidental events – including offshore and coastal interactions, sensitive/special places, mitigations;**
- **Pijakkumik pigasuagatik sakkiviugunik – ilagillugu imappimi amma satjugiami utittalutik, anajagijait/inigijauluakattatut, sujauttailijaukattatut;**
- **Conflict with commercial fisheries, aboriginal fisheries, commercial traffic (e.g. ferry service), and recreational/tourism use of area and loss of access;**
- **Akigattulippata mitsânut kenaudjalutik oganialigunik, nunakakkasimajut ogannialippata, kenaudjanikkut utittalippata (sollu,. Utittautet umait), amma ogannianguanimmut/niuggukattatut atugiasippata inigalanganik amma sivulliutisimammata pigunnangiuligunik.**
- **Attraction of seabirds to lights/flares on structures or vessels; and**
- **Consideration of potential conflict with project activities (including light and noise generated) with tourism operations and the aesthetic and cultural landscape.**
- **Isumagillugit siagugiak akigattunik suliakagiasippata (pigiasippata ikumait iggavialunginnulu) niuggukattatut aulagiasippata amma pilukaungitumut ilusinganullu nunatsiavut.**

7.2.4 Cumulative Project-Environment Interactions/Angijuguvallianinga Suliap-Avatinga Utittaviuningalu

Cumulative effects will be examined in consideration of the estimate of potential exploration activity in the Labrador Shelf SEA Area and mitigation measures identified. Planned and reasonably foreseeable exploration activities will be included in the cumulative effects and will also consider other non-petroleum activities ongoing in the Labrador Shelf SEA Area such as commercial fishing, Aboriginal fishing activities, hunting, marine traffic, tourism operations, and fisheries research surveys. Consideration of marine activities in adjacent areas will be included.

Angijuguvallianinga Suliap-Avatinga Utittaviuningalu isumagillugu kanuk siagugiak kinijalippata iluani Labrador Kulivitsivingani SEA Inigalanganik amma pivallianinganut kaujijauppat. Atuinnauguttitausimajuk amma nigiugijaujut kinigiamut suliagijaulippat ilagiallakaniattut iluani angijuguvalliatut amma isumagijaulutik asingit utsualunniangitut sudlatuinnalippata iluani Labrador

Kulivitsivingani SEA Inigalangani ukua sollu kenauddjanimmot ogannialutik, Nunakakkasimajut oganniagusinnik, pinasuannimut, imappimi motattut, niuggujut, amma ogannianimmot kamagiamut Kimiggujut. Isumagillugu imappimi aulajut atadlutik saniannut inigalangata amma uKâlautauniammijut.

7.2.5 Environment-Project Interactions/Avatinga-Suliap Utittaviuininga

For exploration activities identified, the SEA will include a discussion of the effects of the environment on project activities within the Labrador Shelf SEA Area. These environmental factors may include:

Kinijanimmut suliagijait kaujijaummata, tamna SEA ilakaniattuk ukalautigijaulluni attutaunianninginnik avatinga suliakajukalippat iluani Labrador Kulivitsivingani SEA Inigalangani. Tamakkua avatinganut kaujimajat sollu taijauniattut:

- The occurrence of sea ice and icebergs
 - Kangaulimmat sakkikattaninginnut imappimit sikuit pikulijaillu
 - Temperature, currents; and
 - Kanuk onattigimmangât, imaup aulanningit; amma
 - Severe winds and waves (extreme events).
-
- Anugiluadlalippat ammalu malet (piluadlalippata).

8.0 Conclusions and Recommendations/Nâninga PikKujaliangutitaujullu

Based on the information presented in the physical and biological environment overview, the description of project-environment interactions and the application of mitigation measures, conclusions will be presented and planning approaches recommended for the Board to consider in the issuance of exploration licences in the Labrador Shelf SEA Area. Data gaps with potential to affect the validity of these conclusions will be highlighted. Sensitive areas or areas of concern identified during the SEA process will also be highlighted.

Tugâllugu Kaujijausimajut ukâlautigigamiuk timilluasiangani ammalu ilupsingani avatingata. Sunaummangâllu suliap-avatingani utittaviugiasippat amma ajunnanginisauniammata piusigigialingit, nâningit ukâlautauniattut amma atuinnguttisinik tikitauniattut pikkujaliangutillugit tamakkununga AngajukKauKatigenut isumagijauniammata tunitsikagatik kinijanimmut laisansisanginnik iluani Labrdor Kulivitsivingani SEA Inigalangani. Allatausimangit siagugiak attuigajammata atutsiagiakanninginnik tamakkua pijagettaujut malunnasiangutitauniattut. Anajanattunettugalait ugvalu isumagijauluattuni Kaujijauppata taipsumani SEA-mi piusingata amma malunnasiangutitauniammijut.

9.0 Consultations/Okalakatikannik

Throughout the development of the SEA, the C-NLOPB and its contractor(s), with assistance by the Working Group, will consult with the Nunatsiavut, provincial, and federal government departments, Aboriginal Groups, and Labrador communities, the fishing industry and local non-governmental organizations. Information on the SEA process will be provided and people will be encouraged to discuss issues and concerns that are relevant to the Labrador SEA Shelf Area and SEA objectives.

Ilonnâgut pivallianingata SEA, tamna C-NLOPB amma contractinga(ngit), ikajuttaudlutik Suliakakattatungit, ukalakataikaniattut ukuninga Nunatsiavut ,provinsimi, amma canadaup kavamangata suliakaffinginnik, Nunakakkâsimajut llagejunginnik, amma Labradorimi nunagenginnik, ogannianimmut kenaujaliuttinginnik amma tamanimiunik kavamau-ngitunik katujikatigenninginnik. Kaujisautet mitsânut SEA piusinganik tunijauniattut amma inuit kajusiumakkulugit ukâlautigigiangit isumagijangit isumagiluattangillu mitsânongajut Labrador Kulivitsivinga SEA Inigalanganut amma SEA piusigigumajanginnik.